

Certified Trainer & Driver Recertification Review



Yes or No

Can the Recert be completed via Zoom?....

Does GC set the price range for Recertification?....

Recertification (Added 9.25.23)

65. How long are Qualification Certification and Certified Trainer certificates valid?

Qualification Certification and Certified Trainer certificates expire after 24 months from the date of issuance.

66. What does recertification Certified Trainers entail?

Qualified Providers conduct a two-day, in-person class to recertify Certified Trainers.

Page 14 of 15

Safety
Rev. 10.24.23

67. What is the cost of a Certified Trainer recertification?

Qualified Providers are currently charging anywhere from \$1,750 to \$2,000.

68. What does recertification for L10+ drivers entail?

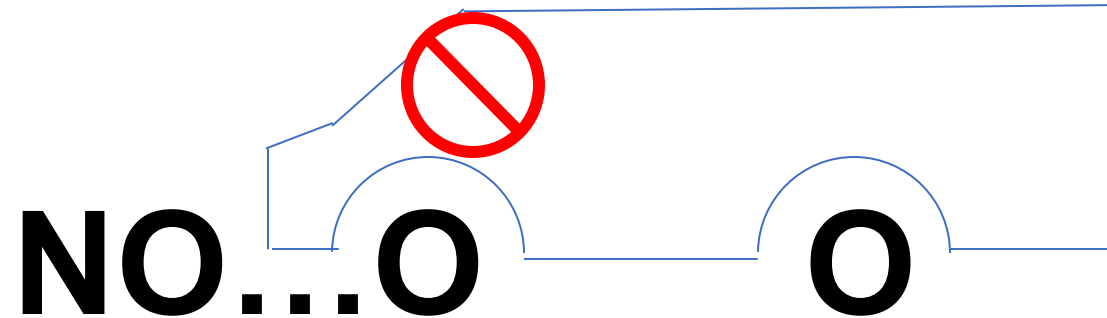
A four- to six-hour in-person training with classroom and yard/obstacle course conducted by a Certified Trainer or Qualified Provider.

69. What if an assigned Certified Trainer will not recertify as a Certified Trainer?

Service providers agree that assigned personnel who will not recertify as a Certified Trainer will receive a valid Qualification Certification upon expiration.

Yes or No

Can drivers still dispatch if their Qual Cert Training has expired....



Topics: **Agreement**

Service providers agree to ensure that assigned personnel maintain a valid Qualification Certification or Certified Trainer certificate (as applicable), both of which expire after 24 months from the date of issuance (ISPA Schedule I, Section 2.1(A)(1)).

Effective Nov. 1, 2023, service provider personnel without a valid Qualification Certification or Certified Trainer certificate will be ineligible to provide service.

Certified Trainer Recert

Certified Trainers need to complete an in-person 2-day Recert Class before their expiration date, in order to perform CT functions (i.e. give a Road Test or train drivers)

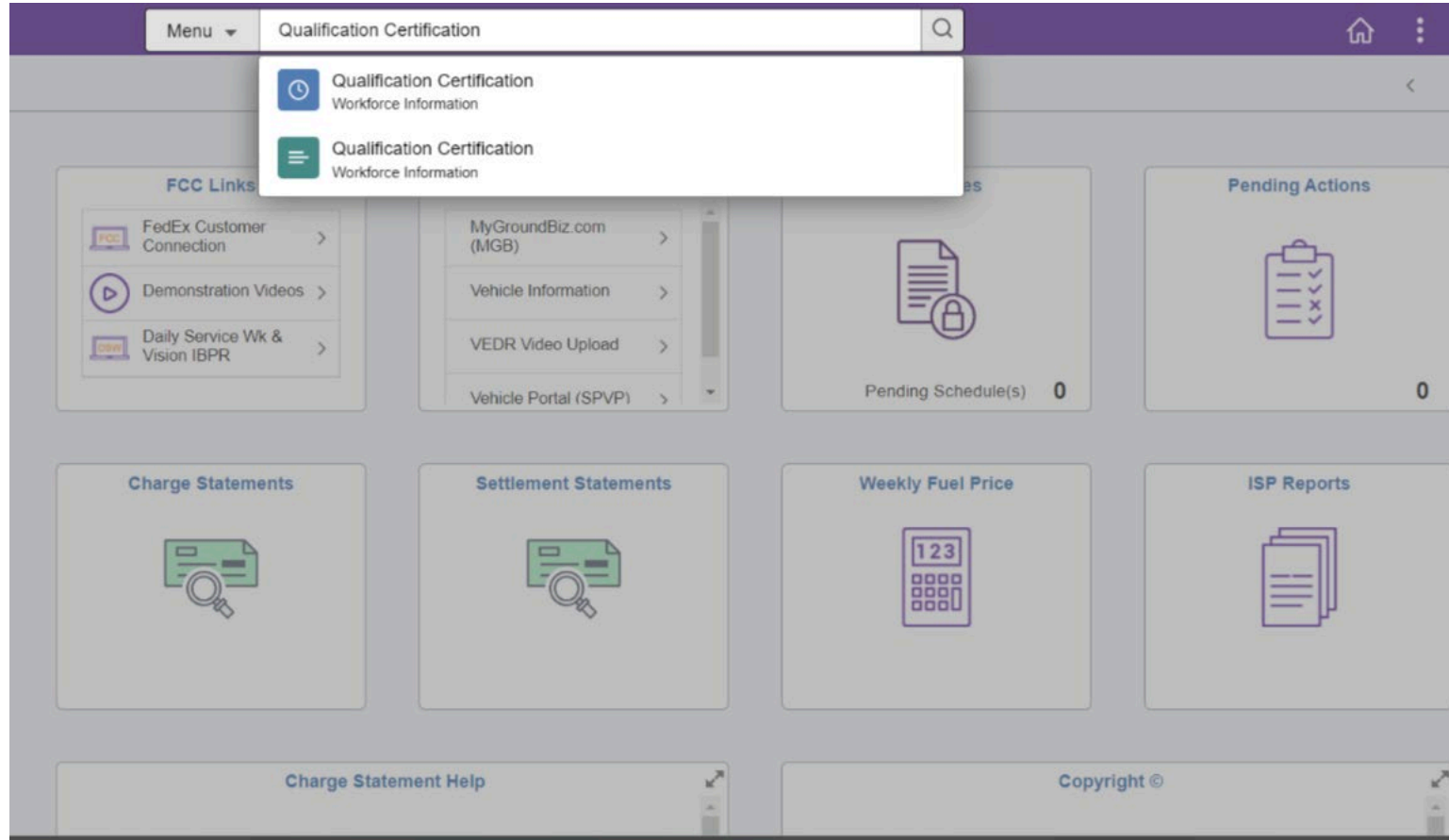
Pre-Screening (Validations) for CT's meeting CT conditions, will no longer be verified by FXG Corp and entities will be asked to use the new MGBA Qual Cert Status Live Data Link to review eligibility.

You can verify the Qual Cert status and expiration dates of your CTs and Drivers by logging into MyGroundBizAccount (MGBA) and navigating to the Main Menu > Workforce Information/Documentation > Qualification Certification.

You can also use the MGBA Search Bar: Qualification Certification-Workforce Information

MGBA Search Menu

You can also use the MGBA Search Bar: Qualification Certification- Workforce Information



MGBA Screenshots

Checking Driver & CT:

Expiration Dates, Qual Cert Status & Live Link to CT/Qualified Observer Conditions.



Qualification Certification												
FedEx ID	Name	Company	Driver Status	Qualification Level	P & D Driver Type	Qual Cert Expiration Date	Qual Cert Status	Qualified Provider	Certified Trainer/Qualified Observer Conditions	Certified Trainer Certificate Expiration	Certified Trainer Status	Certified Trainer Qualified Provider
4		300	Active	Level 80	Less than 26,001 lbs GVWR	01/17/2025	Valid	GroundCloud - Qual Cert	Click to View			
4		300	Active	Level 80	Less than 26,001 lbs GVWR	06/03/2025	Valid	GroundCloud - Qual Cert	Click to View			
E		300	Active	Level 80	Less than 26,001 lbs GVWR	01/16/2025	Valid	GroundCloud - Qual Cert	Click to View			
E		300	Active	Level 80	Less than 26,001 lbs GVWR	02/25/2025	Valid	GroundCloud - Qual Cert	Click to View			
E		300	Active	Level 80	Less than 26,001 lbs GVWR	05/12/2025	Valid	GroundCloud - Qual Cert	Click to View			
E		300	Active	Level 80	Less than 26,001 lbs GVWR	06/05/2025	Valid	GroundCloud - Qual Cert	Click to View			
E		300	Active	Level 80	Less than 26,001 lbs GVWR	06/01/2025	Valid	GroundCloud - Qual Cert	Click to View			
E		300	Active	Level 80	Less than 26,001 lbs GVWR	07/20/2025	Valid	GroundCloud - Qual Cert	Click to View			
E		300	Active	Level 80	Less than 26,001 lbs GVWR	08/20/2025	Valid	GroundCloud - Qual Cert	Click to View			

MGBA Screenshots

After clicking the Live Link – you can review CT & Qualified Observer Conditions

Trainer/Observer Conditions

FedEx/Contract ID: 479

Company: 300 Station ID: 01

Certified Trainer Conditions	Qualified Observer Conditions
Eligible to Pursue Certified Trainer Certification: Yes	Observer Conditions Met: Yes
Last 12 Months	Last 12 Months
Driver Status Continuously Active: Yes	Driver Status Continuously Active: Yes
Continuously Assigned to a Service Provider: Yes	Continuously Assigned to <u>the Same</u> Service Provider: Yes
DOT/Preventable Accident: No	DOT/Preventable Accident: No
Road Test Administrator (RTA) Maximum Qualification Level: Level 80	Maximum Qualification Level to Observe: Level 80

[View Person Summary](#)

MGBA Screenshots

If you find a “NO”, please ask your Station when you will be eligible.
You may still ATTEND a NEW CT or Recert CT class.

Trainer/Observer Conditions

FedEx/Contract ID: 479

Company: 300

Station ID: 01

Certified Trainer Conditions

Eligible to Pursue Certified Trainer Certification: Yes

Last 12 Months

Driver Status Continuously Active: Yes
Continuously Assigned to a Service Provider: Yes
DOT/Preventable Accident: No

Road Test Administrator (RTA) Maximum Qualification Level: Level 80

Qualified Observer Conditions

Observer Conditions Met: Yes

Last 12 Months

Driver Status Continuously Active: Yes
Continuously Assigned to the Same Service Provider: Yes
DOT/Preventable Accident: No

Maximum Qualification Level to Observe: Level 80

[View Person Summary](#)

Qual Cert Pricing

All Qual Cert Vendors are given a price range provided by FXG.

The 2-day in-person training to Recertify a CT is \$1775.

The 4-Day in-person training for NEW CT's remains at \$2750.

Driver Recertification is FREE, other vendors charge for materials

Recertification (Added 9.25.23)

65. How long are Qualification Certification and Certified Trainer certificates valid?

Qualification Certification and Certified Trainer certificates expire after 24 months from the date of issuance.

66. What does recertification Certified Trainers entail?

Qualified Providers conduct a two-day, in-person class to recertify Certified Trainers.

Page 14 of 15

Safety
Rev. 10.24.23

67. What is the cost of a Certified Trainer recertification?

Qualified Providers are currently charging anywhere from \$1,750 to \$2,000.

68. What does recertification for L10+ drivers entail?

A four- to six-hour in-person training with classroom and yard/obstacle course conducted by a Certified Trainer or Qualified Provider.

69. What if an assigned Certified Trainer will not recertify as a Certified Trainer?

Service providers agree that assigned personnel who will not recertify as a Certified Trainer will receive a valid Qualification Certification upon expiration.

Driver Recert



Drivers will be recertified by an eligible Certified Trainer or Qual Cert vendor through a 4-6 hour Classroom, Pre/Post Trip, Driving Range training, with optional on-the-road observation rides.

All information must be entered into GC so we can report to FXG. (Garbage In/ Garbage Out)

You can verify the Qual Cert status and expiration dates of your CTs and Drivers by logging into MyGroundBizAccount (MGBA) and navigating to the Main Menu > Workforce Information/Documentation > Qualification Certification.

You can also use the MGBA Search Bar: Qualification Certification- Workforce Information

Qual Cert Class Schedule



GroundCloud CTs & Driver Recertification courses will be available early January, with the first set of CT & Drivers due mid-late January.

We will post our Recert Class Schedule on our website (GroundCloud.com/Events)

For more information, visit our [Qualification Certification page](#).

**If you need a new Certified Trainer, 4-day Qualification Certification classes will still be available!
Please email TTT@groundcloud.com to sign up.**

Qual Cert Class Offerings

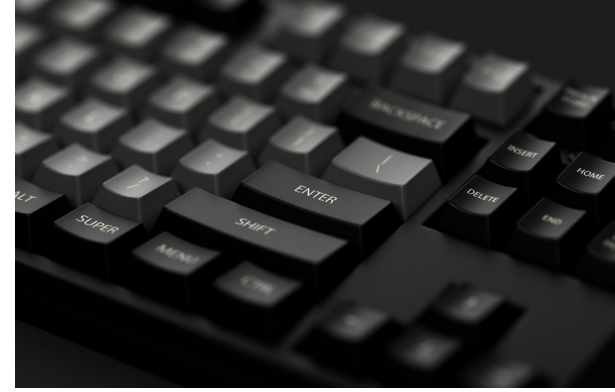


1. **New CT Class** (Was a 5-Day Class, changed to 4-Day Class, 5 days of content over 4 days)
2. **New Driver Class** (3-Day, staying the same)
3. **Existing/Returning/Requalifying Driver** (Available 12/31, will be a 1-Day class)
4. **Recertification - CT** (will be a 2-Day Class)
5. **Recertification - Driver** (will be a 1-Day Class)

Max Class Size for Training Drivers is 6 candidates

Max Class Size for Training CT's is 8 candidates

Qual Cert Data Entry



Every course sent to a driver has a **Unique Enrollment ID**

You cannot reuse the same course for multiple drivers

This will remove ALL records for that driver, including training, payroll, VEDR, on-going safety training....

Qual Cert Class Standards



Be ON TIME. Tardiness will not be tolerated

Must attend each day of class

Must be able to Present material in Class & on Road/Range

QUESTIONS